

# AT-1200WL Weight Loss Powder Feeder

## Consistent powder delivery throughout the volume cycle!

Achieving consistent, high-quality coatings requires precision in powder delivery. Now featuring weight-loss technology, Thermach Powder Feeders bring a new level of control and efficiency, enabling users to optimize powder usage and reduce waste without compromising on performance. Our feeders are engineered to ensure exceptional accuracy and repeatability, essential for optimal application results. Designed with flexibility in mind, they offer a range of customizable options, including high-pressure configurations, expanded capacities, remote controllers, and quick-change canisters.

Precision machined, digital controls, rugged construction, and an internal tamper assembly keep this system feeding consistently, with little maintenance, for many years. Thermach Powder Feeders can be designed to meet and exceed your specifications.

### Challenge

Fluctuations in powder levels during the coating process can lead to inconsistent feed rates, adversely affecting coating quality and uniformity.

### Solution

Thermach's NEW AT-1200WL Weight Loss Powder Feeder is engineered to ensure stable and accurate powder delivery throughout the coating process.



## How does it work?

The feeder rests on top of a scale. The scale constantly monitors the weight of the feeder and ensures consistent feed rate over the volume of the canister. The weight loss control unit assures the precise amount of powder is delivered throughout the cycle from start to finish.

Easy online quote requests at [www.thermach.com](http://www.thermach.com).

Call (920) 779-4299. Email [sales@thermach.com](mailto:sales@thermach.com).

## How a Weight Loss Powder Feeder Improves Efficiency

A weight loss powder feeder addresses these challenges by continuously monitoring and adjusting the feed rate based on actual weight reduction over time. This ensures a more accurate and stable powder delivery, leading to:

**Improved Process Efficiency** – Consistent powder feed rate leads to uniform coatings, reducing rework and improving quality.

**Material Cost Savings** – More precise powder usage minimizes waste, making the process more economical over time.

**Easier Changeovers & Maintenance** – A quick-change canister can allow for seamless transitions between powders and simplifies cleaning.

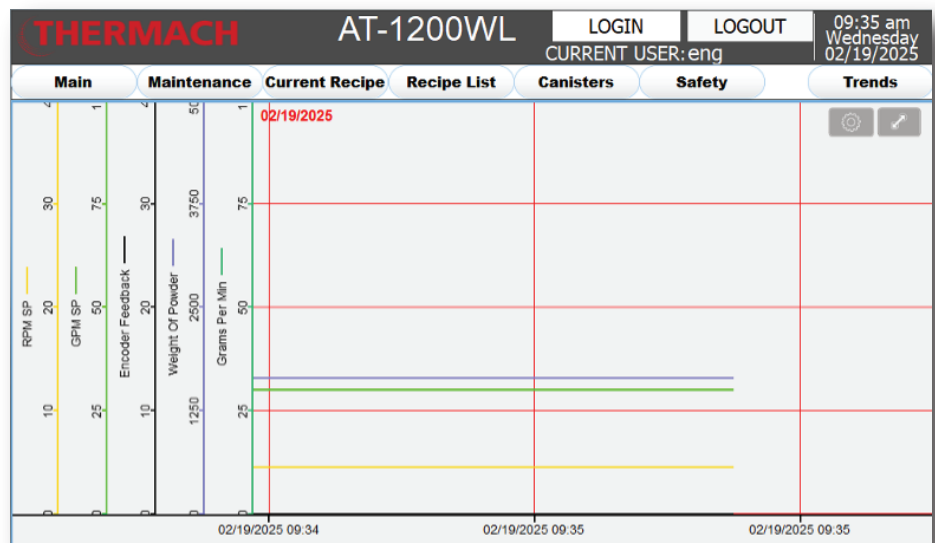
**Real-Time Monitoring & Control** – Integrated trend data tracking helps detect feed inconsistencies early, improving troubleshooting and process stability.

**Operational Flexibility** – Having the system capable of operating in standalone or remote mode, makes it adaptable to different production environments.

**Pinch Valve for Instant Flow Control** – Integrating a pinch valve allows for immediate shutoff of powder flow, reducing excess powder consumption and preventing unnecessary waste.

Even small variations in feed rate can lead to substantial excess material costs over a single shift.

Using the new AT-1200WL Weight Loss Powder Feeder with an integrated Pinch Valve for Instant Flow Control, the system minimizes unnecessary material loss, preventing powder from continuing to flow when not needed.



Equipment that lasts.  
Precision parts  
that work.

Made in the USA for  
extreme conditions  
everywhere.

Solutions that  
allow your  
coatings to excel.

(920) 779-4299  
(920) 779-4452 fax

N677 Communication Drive  
Appleton WI 54914 USA

[www.thermach.com](http://www.thermach.com)